

[Click to go to the page](#)

Nederman



FS
Flat Bag Filter

Nederman

Nederman focuses on individual solutions for individual needs, we utilize the years of experience and expertise to provide you with a quality solution . Since 1975, Nederman has supplied more than 30,000 air cleaning systems delivering world wide Nederman serves all industries – some examples:

- **Metal working industry**

Nederman supplies extraction, air filtration and ventilation systems to all metal working processes. Welding fumes, oil mists, and abrasive grinding dust are typical examples of applications where Nederman supplies solutions that ensure good working environment and high product quality.

- **Flue gas cleaning**

Nederman supplies systems for reduction of noxious gases as well as ordinary dust/smoke filtration from processes like scrap melting, furnaces, incinerators, crematories, coal, wood or oil fired boiler plants. All systems are characterized by low energy consumption and low residual contents.

- **Foundry industry**

Nederman supplies complete filter plants, based on the vast experience of Garant and Nederman, covering all demands in foundries all over the world: Moulding Plants, Sand Plants, Charging, Iron Melting, Aluminum Smelting, Pouring, Fettling and Shotblast.

- **Asphalt industry**

Nederman is a leading supplier of filter plants to all major suppliers of asphalt plants in the world.

The FS (10,000-200,000 CFM)

Used in any type of metal melting, foundry sand systems, hot gas applications and others.



Applications:

Metal • Cement • Powder Bulk • Chemical • Coal Fired Boilers • Incinerators

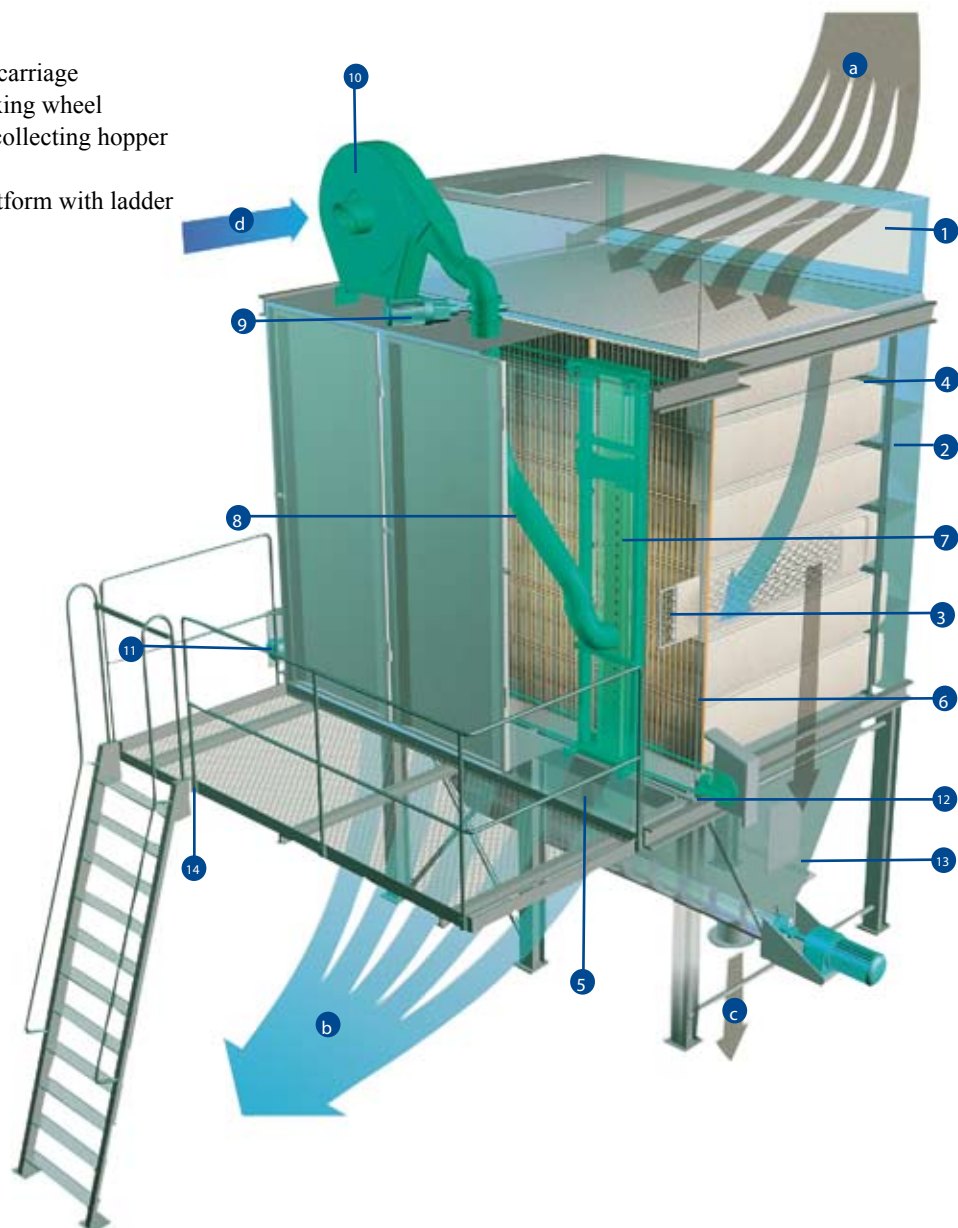
Features

- *European filtration efficiencies*
- *Small footprint*
- *Fully automatic operation*
- *Low-profile*
- *Continuous cleaning*
- *Customizable to specific applications*
- *Guaranteed bag life*
- *Downflow design*
- *Low maintenance, easy to service*
- *Reverse air cleaning*

Components

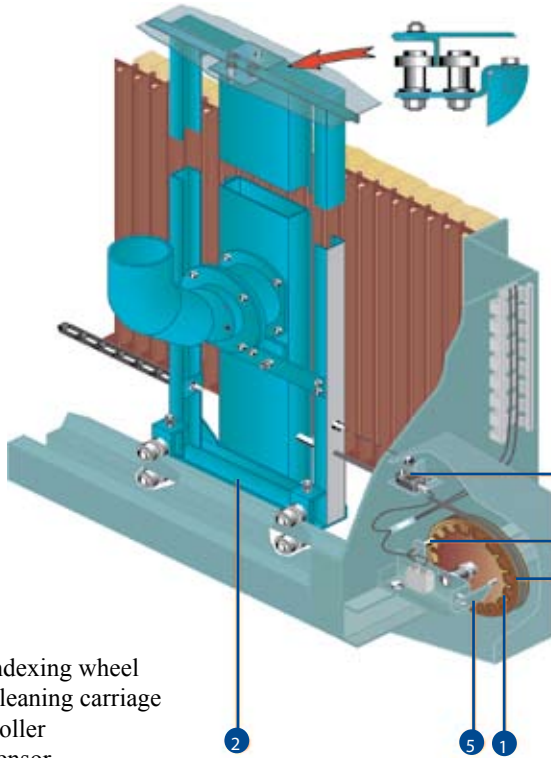
- 1 Dirty-gas hood
- 2 Filter – dirty-gas compartment
- 3 Filter bag with spacer mats
- 4 Filter bag support
- 5 Filter – clean-gas compartment
- 6 Slotted wall with clamping frame
- 7 Cleaning carriage with nozzle
- 8 Cleaning air hose
- 9 Cleaning air valve
- 10 Cleaning air fan
- 11 Driving station for cleaning carriage
- 12 Deflecting station with indexing wheel
- 13 Support structure with dust collecting hopper and evacuation screw
- 14 Access and maintenance platform with ladder

- a Dirty-gas inlet
- b Clean-gas outlet
- c Dust outlet
- d Cleaning air inlet



Cleaning

Cleaning air system for Nederman FS - filter

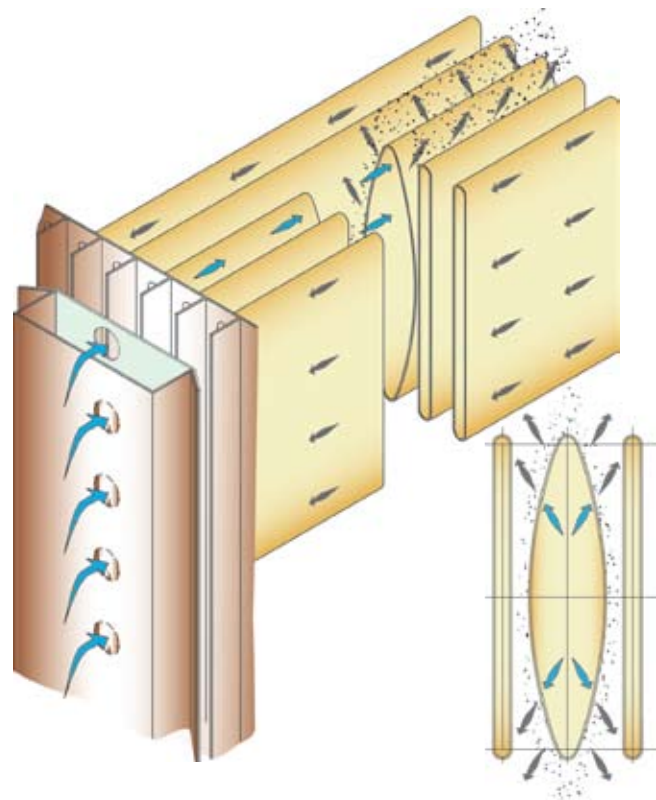


- Reverse air cleaning carriage
- Maintenance free compound bearings temperature resistant up to 662°F
- Top and bottom guide rails

- 1 Indexing wheel
- 2 Cleaning carriage
- 3 Roller
- 4 Sensor
- 5 Locking bar
- 6 Limit switch

Off-Line effect

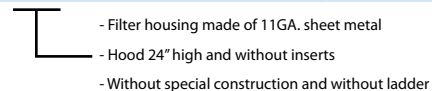
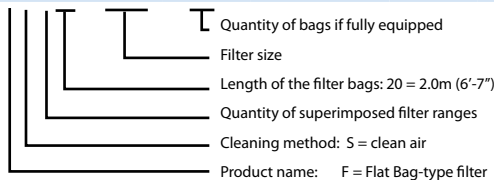
- Seals 3 rows from suction fan
- Cleaning fan only blows down center row of bags
- Thus off-line cleaning while collector is running



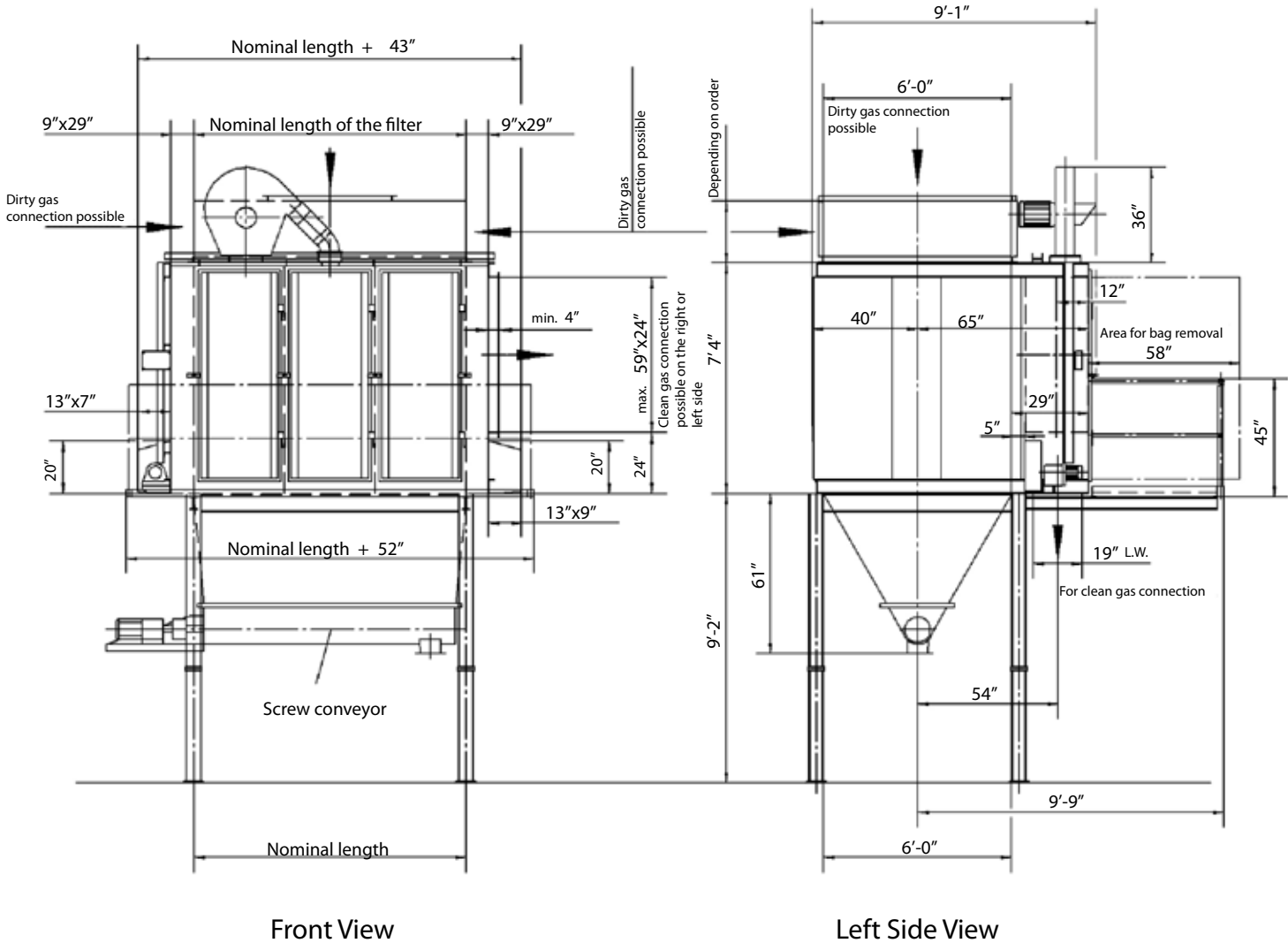
Dimension Sheet

FS 520

Type	Nominal length	Filter surface ft ² gross / net	Quantity of cleaning carriages	Total weight in lbs.	Quantity of compartments	Quantity of pairs of support
FS 520	0.75 75	2'-11"	1098 883	1	6195	1x0.75 2
FS 520	1.00 100	3'-10"	1464 1249	1	7209	1x1.00 2
FS 520	1.25 125	4'-11"	1830 1615	1	8245	1x0.75, 1x0.50 2
FS 520	1.50 150	5'-10"	2196 1981	1	9105	2x0.75 2
FS 520	1.75 175	6'-8"	2562 2347	1	9899	1x1.00, 1x0.75 2
FS 520	2.00 200	7'-7"	2928 2713	1	10494	2x1.00 2
FS 520	2.25 225	8'-8"	3294 3078	1	12015	3x0.75 2
FS 520	2.50 250	9'-7"	3660 3444	1	12632	1x1.00, 2x0.75 2
FS 520	2.75 275	10'-6"	4026 3810	1	13382	2x1.00, 1x0.75 2
FS 520	3.00 300	11'-5"	4392 4176	1	14440	3x1.00 2
FS 520	3.25 325	12'-6"	4758 4542	1	16116	1x1.00, 3x0.75 3
FS 520	3.50 350	13'-5"	5124 4693	2	17152	2x1.00, 2x0.75 3
FS 520	3.75 375	14'-3"	5490 5059	2	17946	3x1.00, 1x0.75 3
FS 520	4.00 400	15'-2"	5856 5425	2	19136	4x1.00 3
FS 520	4.25 425	16'-3"	6222 5791	2	19864	2x1.00, 3x0.75 3
FS 520	4.50 450	17'-2"	6588 6157	2	20701	3x1.00, 2x0.75 3
FS 520	4.75 475	18'-1"	6953 6523	2	21120	4x1.00, 1x0.75 3
FS 520	5.00 500	18'-12"	7319 6889	2	22267	5x1.00 3
FS 520	5.25 525	20'-1"	7685 7255	2	24163	3x1.00, 3x0.75 3
FS 520	5.50 550	20'-11"	8051 7621	2	25089	4x1.00, 2x0.75 3
FS 520	5.75 575	21'-10"	8417 7987	2	25684	5x1.00, 1x0.75 4
FS 520	6.00 600	22'-9"	8783 8353	2	26389	6x1.00 4
FS 520	6.25 625	23'-10"	9149 8719	2	27558	4x1.00, 3x0.75 4
FS 520	6.50 650	24'-9"	9515 9085	2	28351	5x1.00, 2x0.75 4
FS 520	6.75 675	25'-8"	9881 9451	2	28991	6x1.00, 1x0.75 4
FS 520	7.00 700	26'-7"	10247 9591	3	30291	7x1.00 4
FS 520	7.25 725	27'-8"	10613 9957	3	31592	5x1.00, 3x0.75 4
FS 520	7.50 750	28'-6"	10979 10323	3	32342	6x1.00, 2x0.75 4
FS 520	7.75 775	29'-5"	11345 10689	3	33157	7x1.00, 1x0.75 4
FS 520	8.00 800	30'-4"	11711 11055	3	34150	8x1.00 4
FS 520	8.25 825	31'-5"	12077 11421	3	35693	6x1.00, 3x0.75 4
FS 520	8.50 850	32'-4"	12443 11786	3	36531	7x1.00, 2x0.75 5
FS 520	8.75 875	33'-3"	12809 12152	3	37258	8x1.00, 1x0.75 5
FS 520	9.00 900	34'-2"	13175 12518	3	38096	9x1.00 5
FS 520	9.25 925	35'-3"	13541 12884	3	39154	7x1.00, 3x0.75 5
FS 520	9.50 950	36'-1"	13907 13250	3	40080	8x1.00, 2x0.75 5
FS 520	9.75 975	37'-0"	14273 13616	3	40852	9x1.00, 1x0.75 5
FS 520	10.00 1000	37'-11"	14639 13982	4	41976	10x1.00 5
FS 520	10.25 1025	39'-0"	15005 14348	4	42858	8x1.00, 3x0.75 5
FS 520	10.50 1050	39'-11"	15371 14714	4	44577	9x1.00, 2x0.75 5
FS 520	10.75 1075	40'-10"	15737 15080	4	45062	10x1.00, 1x0.75 5
FS 520	11.00 1100	41'-9"	16103 15446	4	46055	11x1.00 5



FS 520



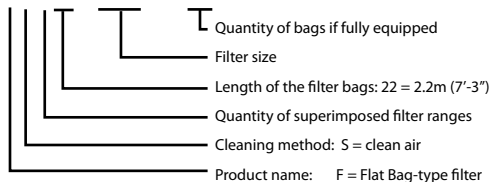
Front View

Left Side View

Dimension Sheet

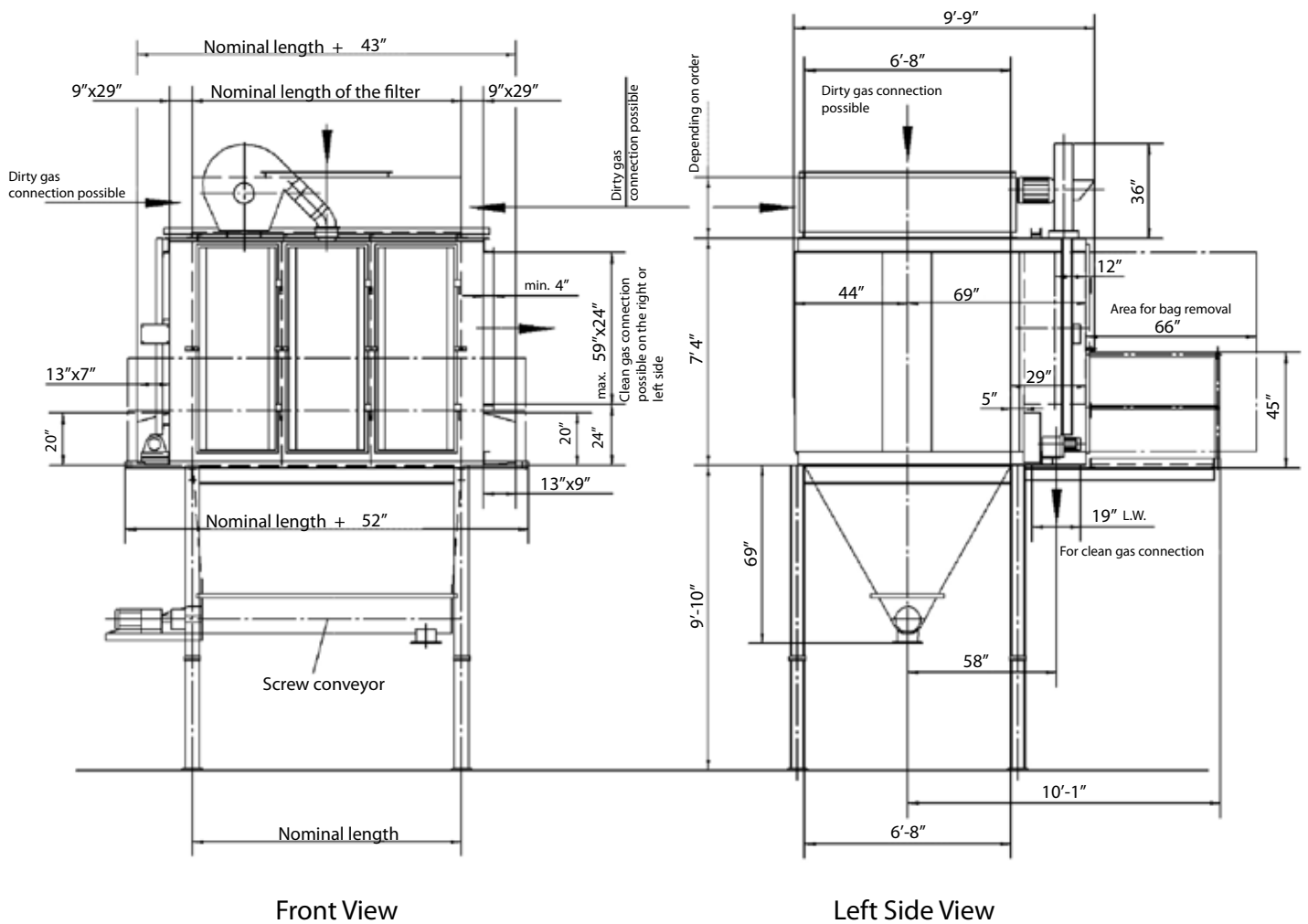
FS 522

Type	Nominal length	Filter surface ft ² gross / net	Quantity of cleaning carriages	Total weight in lbs.	Quantity of compartments	Quantity of pairs of support
FS 522	0.75 75	2'-11"	1216 980	1	6195	1x0.75 2
FS 522	1.00 100	3'-10"	1615 1378	1	7209	1x1.00 2
FS 522	1.25 125	4'-11"	2024 1787	1	8245	1x0.75, 1x0.50 2
FS 522	1.50 150	5'-10"	2422 2185	1	9105	2x0.75 2
FS 522	1.75 175	6'-8"	2831 2594	1	9899	1x1.00, 1x0.75 2
FS 522	2.00 200	7'-7"	3229 2992	1	10494	2x1.00 2
FS 522	2.25 225	8'-8"	3638 3401	1	12015	3x0.75 2
FS 522	2.50 250	9'-7"	4036 3800	1	12632	1x1.00, 2x0.75 2
FS 522	2.75 275	10'-6"	4445 4209	1	13382	2x1.00, 1x0.75 2
FS 522	3.00 300	11'-5"	4844 4607	1	14440	3x1.00 2
FS 522	3.25 325	12'-6"	5253 5016	1	16116	1x1.00, 3x0.75 3
FS 522	3.50 350	13'-5"	5651 5167	2	17152	2x1.00, 2x0.75 3
FS 522	3.75 375	14'-3"	6060 5576	2	17946	3x1.00, 1x0.75 3
FS 522	4.00 400	15'-2"	6458 5974	2	19136	4x1.00 3
FS 522	4.25 425	16'-3"	6867 6383	2	19864	2x1.00, 3x0.75 3
FS 522	4.50 450	17'-2"	7266 6781	2	20701	3x1.00, 2x0.75 3
FS 522	4.75 475	18'-1"	7675 7190	2	21120	4x1.00, 1x0.75 3
FS 522	5.00 500	18'-12"	8073 7589	2	22267	5x1.00 3
FS 522	5.25 525	20'-1"	8482 7998	2	24163	3x1.00, 3x0.75 3
FS 522	5.50 550	20'-11"	8880 8396	2	25089	4x1.00, 2x0.75 3
FS 522	5.75 575	21'-10"	9289 8805	2	25684	5x1.00, 1x0.75 4
FS 522	6.00 600	22'-9"	9688 9203	2	26389	6x1.00 4
FS 522	6.25 625	23'-10"	10097 9612	2	27558	4x1.00, 3x0.75 4
FS 522	6.50 650	24'-9"	10495 10010	2	28351	5x1.00, 2x0.75 4
FS 522	6.75 675	25'-8"	10904 10419	2	28991	6x1.00, 1x0.75 4
FS 522	7.00 700	26'-7"	11302 10581	3	30291	7x1.00 4
FS 522	7.25 725	27'-8"	11711 10990	3	31592	5x1.00, 3x0.75 4
FS 522	7.50 750	28'-6"	12109 11388	3	32342	6x1.00, 2x0.75 4
FS 522	7.75 775	29'-5"	12518 11797	3	33157	7x1.00, 1x0.75 4
FS 522	8.00 800	30'-4"	12917 12196	3	34150	8x1.00 4
FS 522	8.25 825	31'-5"	13326 12605	3	35693	6x1.00, 3x0.75 4
FS 522	8.50 850	32'-4"	13724 13003	3	36531	7x1.00, 2x0.75 5
FS 522	8.75 875	33'-3"	14133 13412	3	37258	8x1.00, 1x0.75 5
FS 522	9.00 900	34'-2"	14531 13810	3	38096	9x1.00 5
FS 522	9.25 925	35'-3"	14940 14219	3	39154	7x1.00, 3x0.75 5
FS 522	9.50 950	36'-1"	15339 14617	3	40080	8x1.00, 2x0.75 5
FS 522	9.75 975	37'-0"	15748 15026	3	40852	9x1.00, 1x0.75 5
FS 522	10.00 1000	37'-11"	16146 15177	4	41976	10x1.00 5
FS 522	10.25 1025	39'-0"	16555 15586	4	42858	8x1.00, 3x0.75 5
FS 522	10.50 1050	39'-11"	16953 15984	4	44577	9x1.00, 2x0.75 5
FS 522	10.75 1075	40'-10"	17362 16393	4	45062	10x1.00, 1x0.75 5
FS 522	11.00 1100	41'-9"	17760 16792	4	46055	11x1.00 5



- Filter housing made of 11GA. sheet metal
- Hood 24" high and without inserts
- Without special construction and without ladder

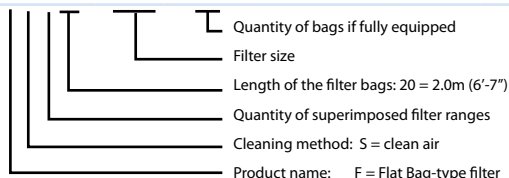
FS 522



Dimension Sheet

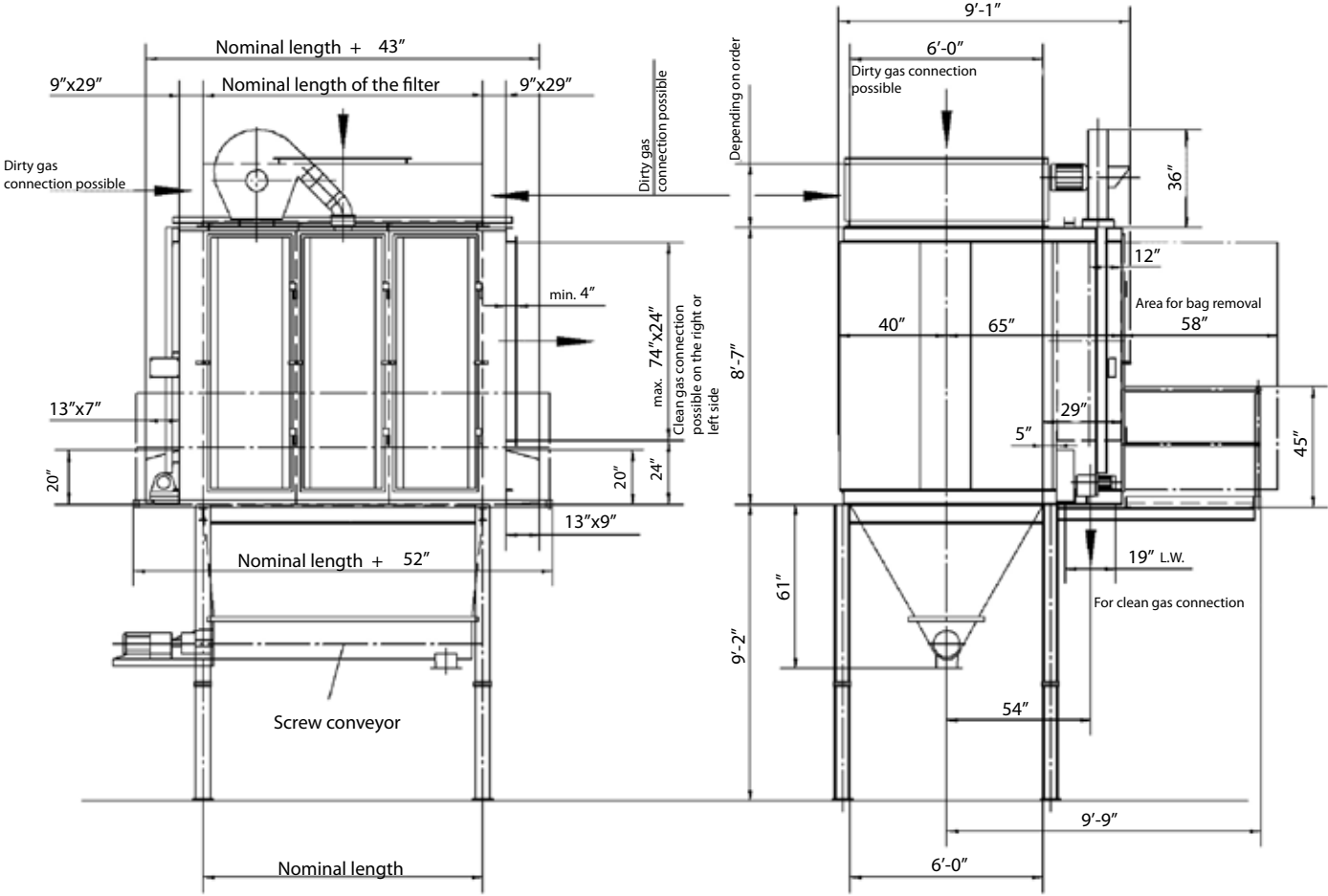
FS 620

Type	Nominal length	Filter surface ft ² gross / net	Quantity of cleaning carriages	Total weight in lbs.	Quantity of compartments	Quantity of pairs of support		
FS 620	0.75	90	2'-11"	1324 1066	1	6504	1x0.75	2
FS 620	1.00	120	3'-10"	1765 1507	1	7584	1x1.00	2
FS 620	1.25	150	4'-11"	2196 1938	1	8620	1x0.75, 1x0.50	2
FS 620	1.50	180	5'-10"	2637 2379	1	9546	2x0.75	2
FS 620	1.75	210	6'-8"	3078 2820	1	10428	1x1.00, 1x0.75	2
FS 620	2.00	240	7'-7"	3520 3261	1	11089	2x1.00	2
FS 620	2.25	270	8'-8"	3961 3703	1	12610	3x0.75	2
FS 620	2.50	300	9'-7"	4392 4133	1	13294	1x1.00, 2x0.75	2
FS 620	2.75	330	10'-6"	4833 4575	1	14132	2x1.00, 1x0.75	2
FS 620	3.00	360	11'-5"	5274 5016	1	15256	3x1.00	2
FS 620	3.25	390	12'-6"	5716 5457	1	16931	1x1.00, 3x0.75	3
FS 620	3.50	420	13'-5"	6157 5630	2	18056	2x1.00, 2x0.75	3
FS 620	3.75	450	14'-3"	6588 6060	2	18916	3x1.00, 1x0.75	3
FS 620	4.00	480	15'-2"	7029 6501	2	20172	4x1.00	3
FS 620	4.25	510	16'-3"	7470 6943	2	20922	2x1.00, 3x0.75	3
FS 620	4.50	540	17'-2"	7911 7384	2	21826	3x1.00, 2x0.75	3
FS 620	4.75	570	18'-1"	8353 7825	2	22311	4x1.00, 1x0.75	3
FS 620	5.00	600	18'-12"	8783 8256	2	23523	5x1.00	3
FS 620	5.25	630	20'-1"	9225 8697	2	25419	3x1.00, 3x0.75	3
FS 620	5.50	660	20'-11"	9666 9139	2	26433	4x1.00, 2x0.75	3
FS 620	5.75	690	21'-10"	10107 9580	2	27095	5x1.00, 1x0.75	4
FS 620	6.00	720	22'-9"	10549 10021	2	27866	6x1.00	4
FS 620	6.25	750	23'-10"	10979 10452	2	29035	4x1.00, 3x0.75	4
FS 620	6.50	780	24'-9"	11421 10893	2	29895	5x1.00, 2x0.75	4
FS 620	6.75	810	25'-8"	11862 11334	2	30600	6x1.00, 1x0.75	4
FS 620	7.00	840	26'-7"	12303 11517	3	32011	7x1.00	4
FS 620	7.25	870	27'-8"	12744 11959	3	33312	5x1.00, 3x0.75	4
FS 620	7.50	900	28'-6"	13175 12389	3	34128	6x1.00, 2x0.75	4
FS 620	7.75	930	29'-5"	13616 12831	3	35009	7x1.00, 1x0.75	4
FS 620	8.00	960	30'-4"	14058 13272	3	36090	8x1.00	4
FS 620	8.25	990	31'-5"	14499 13713	3	37633	6x1.00, 3x0.75	4
FS 620	8.50	1020	32'-4"	14940 14155	3	38537	7x1.00, 2x0.75	5
FS 620	8.75	1050	33'-3"	15371 14585	3	39330	8x1.00, 1x0.75	5
FS 620	9.00	1080	34'-2"	15812 15026	3	40234	9x1.00	5
FS 620	9.25	1110	35'-3"	16254 15468	3	41315	7x1.00, 3x0.75	5
FS 620	9.50	1140	36'-1"	16695 15909	3	42307	8x1.00, 2x0.75	5
FS 620	9.75	1170	37'-0"	17136 16350	3	43144	9x1.00, 1x0.75	5
FS 620	10.00	1200	37'-11"	17567 16512	4	44335	10x1.00	5
FS 620	10.25	1230	39'-0"	18008 16953	4	45239	8x1.00, 3x0.75	5
FS 620	10.50	1260	39'-11"	18449 17394	4	47025	9x1.00, 2x0.75	5
FS 620	10.75	1290	40'-10"	18891 17836	4	47598	10x1.00, 1x0.75	5
FS 620	11.00	1320	41'-9"	19332 18277	4	48656	11x1.00	5



- Filter housing made of 11GA. sheet metal
- Hood 24" high and without inserts
- Without special construction and without ladder

FS 620



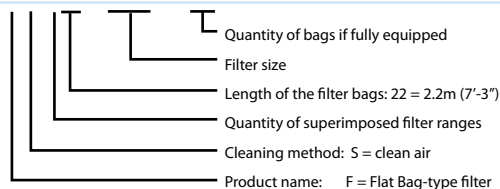
Front View

Left Side View

Dimension Sheet

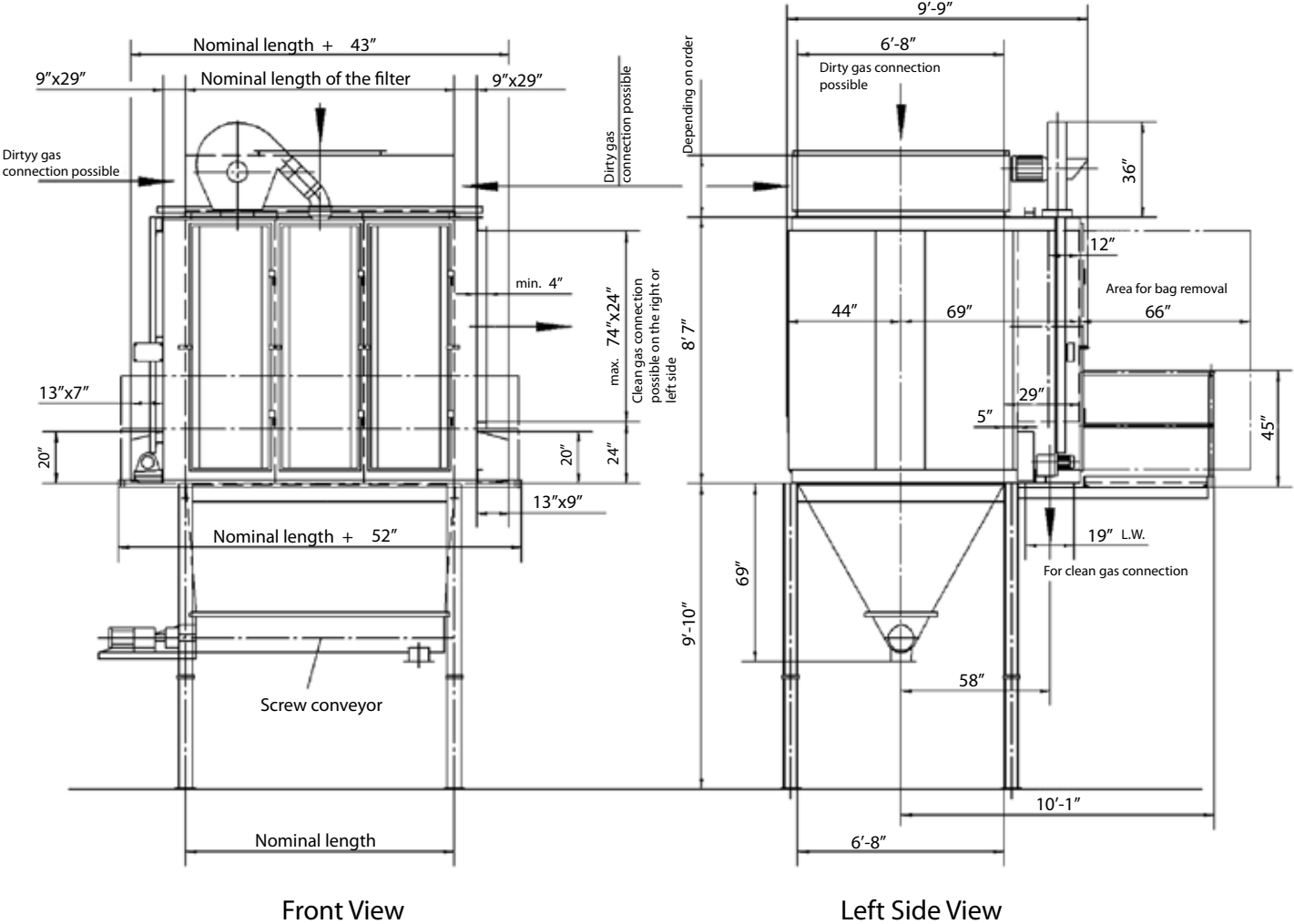
FS 622

Type	Nominal length	Filter surface ft ² gross / net	Quantity of cleaning carriages	Total weight in lbs.	Quantity of compartments	Quantity of pairs of support
FS 622	0.75 90	2'-11"	1453 1163	1	6834	1x0.75 2
FS 622	1.00 120	3'-10"	1938 1647	1	7981	1x1.00 2
FS 622	1.25 150	4'-11"	2422 2131	1	9061	1x0.75, 1x0.50 2
FS 622	1.50 180	5'-10"	2906 2616	1	10031	2x0.75 2
FS 622	1.75 210	6'-8"	3391 3100	1	10957	1x1.00, 1x0.75 2
FS 622	2.00 240	7'-7"	3875 3584	1	11662	2x1.00 2
FS 622	2.25 270	8'-8"	4359 4069	1	13241	3x0.75 2
FS 622	2.50 300	9'-7"	4844 4553	1	13977	1x1.00, 2x0.75 2
FS 622	2.75 330	10'-6"	5328 5038	1	14859	2x1.00, 1x0.75 2
FS 622	3.00 360	11'-5"	5813 5522	1	16028	3x1.00 2
FS 622	3.25 390	12'-6"	6297 6006	1	17791	1x1.00, 3x0.75 3
FS 622	3.50 420	13'-5"	6781 6200	2	18960	2x1.00, 2x0.75 3
FS 622	3.75 450	14'-3"	7266 6684	2	19864	3x1.00, 1x0.75 3
FS 622	4.00 480	15'-2"	7750 7169	2	21186	4x1.00 3
FS 622	4.25 510	16'-3"	8234 7653	2	21980	2x1.00, 3x0.75 3
FS 622	4.50 540	17'-2"	8719 8138	2	22928	3x1.00, 2x0.75 3
FS 622	4.75 570	18'-1"	9203 8622	2	23435	4x1.00, 1x0.75 3
FS 622	5.00 600	18'-12"	9688 9106	2	24714	5x1.00 3
FS 622	5.25 630	20'-1"	10172 9591	2	26698	3x1.00, 3x0.75 3
FS 622	5.50 660	20'-11"	10656 10075	2	27756	4x1.00, 2x0.75 3
FS 622	5.75 690	21'-10"	11141 10559	2	28462	5x1.00, 1x0.75 4
FS 622	6.00 720	22'-9"	11625 11044	2	29277	6x1.00 4
FS 622	6.25 750	23'-10"	12109 11528	2	30490	4x1.00, 3x0.75 4
FS 622	6.50 780	24'-9"	12594 12013	2	31394	5x1.00, 2x0.75 4
FS 622	6.75 810	25'-8"	13078 12497	2	32143	6x1.00, 1x0.75 4
FS 622	7.00 840	26'-7"	13563 12691	3	33620	7x1.00 4
FS 622	7.25 870	27'-8"	14047 13175	3	34987	5x1.00, 3x0.75 4
FS 622	7.50 900	28'-6"	14531 13659	3	35847	6x1.00, 2x0.75 4
FS 622	7.75 930	29'-5"	15016 14144	3	36773	7x1.00, 1x0.75 4
FS 622	8.00 960	30'-4"	15500 14628	3	37897	8x1.00 4
FS 622	8.25 990	31'-5"	15984 15113	3	39529	6x1.00, 3x0.75 4
FS 622	8.50 1020	32'-4"	16469 15597	3	40477	7x1.00, 2x0.75 5
FS 622	8.75 1050	33'-3"	16953 16081	3	41315	8x1.00, 1x0.75 5
FS 622	9.00 1080	34'-2"	17438 16566	3	42263	9x1.00 5
FS 622	9.25 1110	35'-3"	17922 17050	3	43387	7x1.00, 3x0.75 5
FS 622	9.50 1140	36'-1"	18406 17534	3	44423	8x1.00, 2x0.75 5
FS 622	9.75 1170	37'-0"	18891 18019	3	45305	9x1.00, 1x0.75 5
FS 622	10.00 1200	37'-11"	19375 18503	4	46562	10x1.00 5
FS 622	10.25 1230	39'-0"	19859 18988	4	47510	8x1.00, 3x0.75 5
FS 622	10.50 1260	39'-11"	20344 19472	4	49383	9x1.00, 2x0.75 5
FS 622	10.75 1290	40'-10"	20828 19956	4	49979	10x1.00, 1x0.75 5
FS 622	11.00 1320	41'-9"	21313 20441	4	51103	11x1.00 5



- Filter housing made of 11GA. sheet metal
- Hood 24" high and without inserts
- Without special construction and without ladder

FS 622



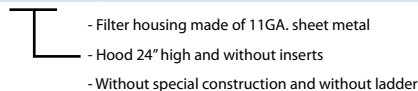
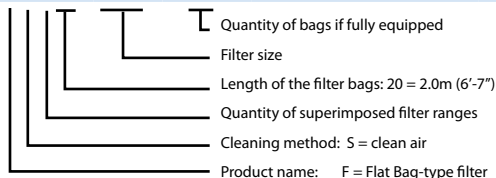
Front View

Left Side View

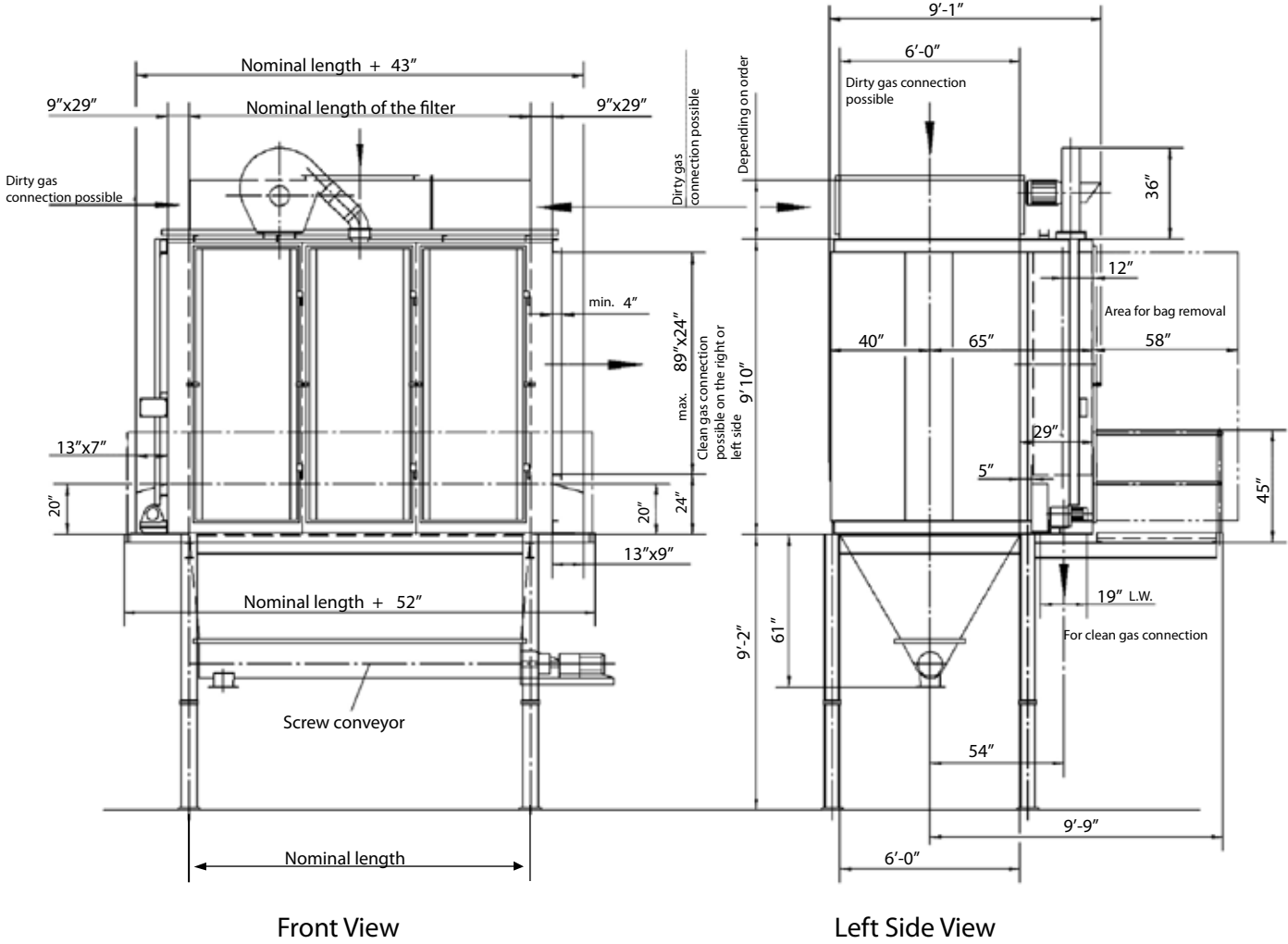
Dimension Sheet

FS 720

Type	Nominal length	Filter surface ft ² gross / net	Quantity of cleaning carriages	Total weight in lbs.	Quantity of compartments	Quantity of pairs of support		
FS 720	0.75	105	2'-11"	1539 1238	1	6812	1x0.75	2
FS 720	1.00	140	3'-10"	2056 1755	1	7981	1x1.00	2
FS 720	1.25	175	4'-11"	2562 2260	1	9017	1x0.75, 1x0.50	2
FS 720	1.50	210	5'-10"	3078 2777	1	10009	2x0.75	2
FS 720	1.75	245	6'-8"	3595 3294	1	10957	1x1.00, 1x0.75	2
FS 720	2.00	280	7'-7"	4101 3800	1	11684	2x1.00	2
FS 720	2.25	315	8'-8"	4618 4316	1	13228	3x0.75	2
FS 720	2.50	350	9'-7"	5124 4822	1	13977	1x1.00, 2x0.75	2
FS 720	2.75	385	10'-6"	5640 5339	1	14881	2x1.00, 1x0.75	2
FS 720	3.00	420	11'-5"	6157 5856	1	16072	3x1.00	2
FS 720	3.25	455	12'-6"	6663 6361	1	17769	1x1.00, 3x0.75	3
FS 720	3.50	490	13'-5"	7180 6566	2	19004	2x1.00, 2x0.75	3
FS 720	3.75	525	14'-3"	7685 7072	2	19908	3x1.00, 1x0.75	3
FS 720	4.00	560	15'-2"	8202 7589	2	21230	4x1.00	3
FS 720	4.25	595	16'-3"	8719 8105	2	21980	2x1.00, 3x0.75	3
FS 720	4.50	630	17'-2"	9225 8611	2	22972	3x1.00, 2x0.75	3
FS 720	4.75	665	18'-1"	9741 9128	2	23523	4x1.00, 1x0.75	3
FS 720	5.00	700	18'-12"	10247 9634	2	24802	5x1.00	3
FS 720	5.25	735	20'-1"	10764 10150	2	26698	3x1.00, 3x0.75	3
FS 720	5.50	770	20'-11"	11281 10667	2	27778	4x1.00, 2x0.75	3
FS 720	5.75	805	21'-10"	11786 11173	2	28528	5x1.00, 1x0.75	4
FS 720	6.00	840	22'-9"	12303 11690	2	28969	6x1.00	4
FS 720	6.25	875	23'-10"	12809 12196	2	30534	4x1.00, 3x0.75	4
FS 720	6.50	910	24'-9"	13326 12712	2	31460	5x1.00, 2x0.75	4
FS 720	6.75	945	25'-8"	13842 13229	2	32232	6x1.00, 1x0.75	4
FS 720	7.00	980	26'-7"	14348 13433	3	33731	7x1.00	4
FS 720	7.25	1015	27'-8"	14865 13950	3	35053	5x1.00, 3x0.75	4
FS 720	7.50	1050	28'-6"	15371 14456	3	35935	6x1.00, 2x0.75	4
FS 720	7.75	1085	29'-5"	15888 14973	3	36883	7x1.00, 1x0.75	4
FS 720	8.00	1120	30'-4"	16404 15489	3	38030	8x1.00	4
FS 720	8.25	1155	31'-5"	16910 15995	3	39573	6x1.00, 3x0.75	4
FS 720	8.50	1190	32'-4"	17427 16512	3	40565	7x1.00, 2x0.75	5
FS 720	8.75	1225	33'-3"	17933 17018	3	41425	8x1.00, 1x0.75	5
FS 720	9.00	1260	34'-2"	18449 17534	3	42395	9x1.00	5
FS 720	9.25	1295	35'-3"	18966 18051	3	43475	7x1.00, 3x0.75	5
FS 720	9.50	1330	36'-1"	19472 18557	3	44555	8x1.00, 2x0.75	5
FS 720	9.75	1365	37'-0"	19989 19074	3	45459	9x1.00, 1x0.75	5
FS 720	10.00	1400	37'-11"	20494 19267	4	46716	10x1.00	5
FS 720	10.25	1435	39'-0"	21011 19784	4	47642	8x1.00, 3x0.75	5
FS 720	10.50	1470	39'-11"	21528 20301	4	49494	9x1.00, 2x0.75	5
FS 720	10.75	1505	40'-10"	22034 20807	4	50155	10x1.00, 1x0.75	5
FS 720	11.00	1540	41'-9"	22550 21323	4	51279	11x1.00	5



FS 720



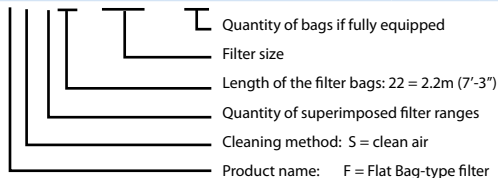
Front View

Left Side View

Dimension Sheet

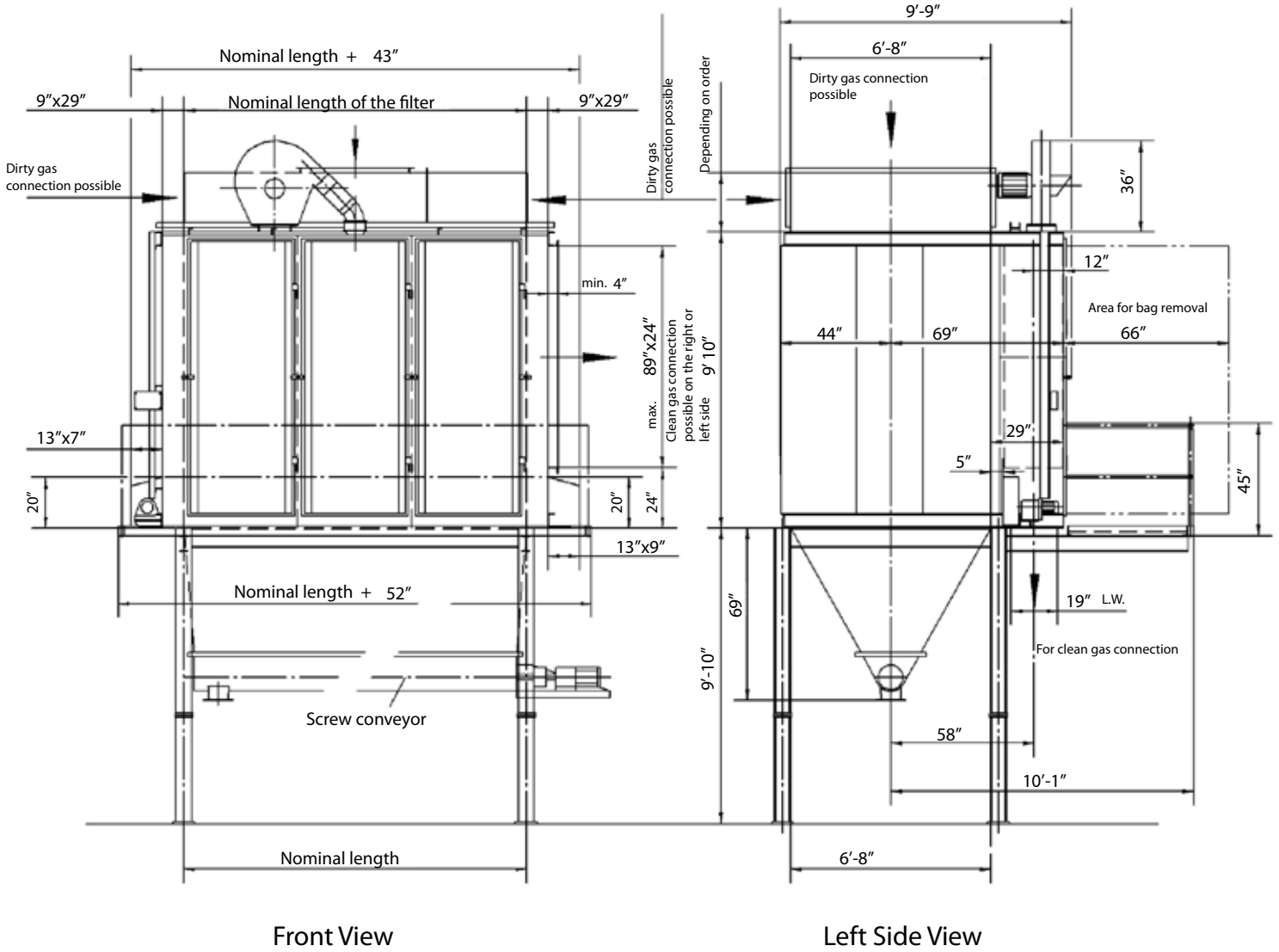
FS 722

Type	Nominal length	Filter surface ft ² gross / net	Quantity of cleaning carriages	Total weight in lbs.	Quantity of compartments	Quantity of pairs of support			
FS 722	0.75	105	2'-11"	1701	1367	1	7165	1x0.75	2
FS 722	1.00	140	3'-10"	2260	1927	1	8400	1x1.00	2
FS 722	1.25	175	4'-11"	2831	2497	1	9480	1x0.75, 1x0.50	2
FS 722	1.50	210	5'-10"	3391	3057	1	10516	2x0.75	2
FS 722	1.75	245	6'-8"	3961	3627	1	11508	1x1.00, 1x0.75	2
FS 722	2.00	280	7'-7"	4521	4187	1	12280	2x1.00	2
FS 722	2.25	315	8'-8"	5091	4758	1	13889	3x0.75	2
FS 722	2.50	350	9'-7"	5651	5317	1	14550	1x1.00, 2x0.75	2
FS 722	2.75	385	10'-6"	6222	5888	1	15631	2x1.00, 1x0.75	2
FS 722	3.00	420	11'-5"	6781	6448	1	16887	3x1.00	2
FS 722	3.25	455	12'-6"	7352	7018	1	18651	1x1.00, 3x0.75	3
FS 722	3.50	490	13'-5"	7911	7233	2	19974	2x1.00, 2x0.75	3
FS 722	3.75	525	14'-3"	8482	7804	2	20922	3x1.00, 1x0.75	3
FS 722	4.00	560	15'-2"	9042	8364	2	22311	4x1.00	3
FS 722	4.25	595	16'-3"	9612	8934	2	23082	2x1.00, 3x0.75	3
FS 722	4.50	630	17'-2"	10172	9494	2	24141	3x1.00, 2x0.75	3
FS 722	4.75	665	18'-1"	10742	10064	2	24714	4x1.00, 1x0.75	3
FS 722	5.00	700	19'-0"	11302	10624	2	26059	5x1.00	3
FS 722	5.25	735	20'-1"	11873	11194	2	28043	3x1.00, 3x0.75	3
FS 722	5.50	770	20'-11"	12432	11754	2	29167	4x1.00, 2x0.75	3
FS 722	5.75	805	21'-10"	13003	12325	2	29961	5x1.00, 1x0.75	4
FS 722	6.00	840	22'-9"	13563	12884	2	30424	6x1.00	4
FS 722	6.25	875	23'-10"	14133	13455	2	32077	4x1.00, 3x0.75	4
FS 722	6.50	910	24'-9"	14693	14015	2	33047	5x1.00, 2x0.75	4
FS 722	6.75	945	25'-8"	15263	14585	2	33863	6x1.00, 1x0.75	4
FS 722	7.00	980	26'-7"	15823	14811	3	35428	7x1.00	4
FS 722	7.25	1015	27'-8"	16393	15382	3	36817	5x1.00, 3x0.75	4
FS 722	7.50	1050	28'-6"	16953	15941	3	37743	6x1.00, 2x0.75	4
FS 722	7.75	1085	29'-5"	17524	16512	3	38735	7x1.00, 1x0.75	4
FS 722	8.00	1120	30'-4"	18083	17072	3	39948	8x1.00	4
FS 722	8.25	1155	31'-5"	18654	17642	3	41557	6x1.00, 3x0.75	4
FS 722	8.50	1190	32'-4"	19214	18202	3	42593	7x1.00, 2x0.75	5
FS 722	8.75	1225	33'-3"	19784	18772	3	43497	8x1.00, 1x0.75	5
FS 722	9.00	1260	34'-2"	20344	19332	3	44533	9x1.00	5
FS 722	9.25	1295	35'-3"	20914	19902	3	45658	7x1.00, 3x0.75	5
FS 722	9.50	1330	36'-1"	21474	20462	3	46782	8x1.00, 2x0.75	5
FS 722	9.75	1365	37'-0"	22044	21033	3	47752	9x1.00, 1x0.75	5
FS 722	10.00	1400	37'-11"	22604	21248	4	49053	10x1.00	5
FS 722	10.25	1435	39'-0"	23175	21818	4	50023	8x1.00, 3x0.75	5
FS 722	10.50	1470	39'-11"	23734	22378	4	51985	9x1.00, 2x0.75	5
FS 722	10.75	1505	40'-10"	24305	22949	4	52668	10x1.00, 1x0.75	5
FS 722	11.00	1540	41'-9"	24865	23508	4	53859	11x1.00	5



- Filter housing made of 11GA. sheet metal
- Hood 24" high and without inserts
- Without special construction and without ladder

FS 722



Front View

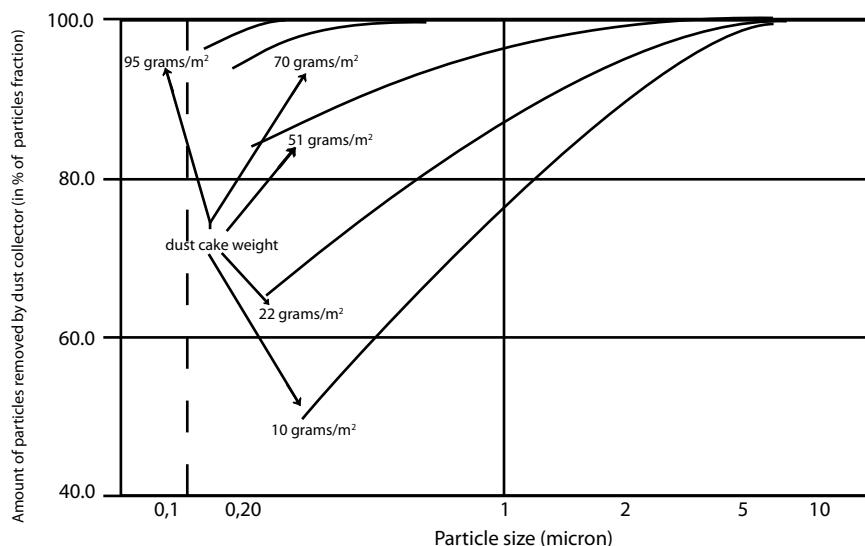
Left Side View

Why Reverse Air?

Filters Better

Dust removal in relation to filter cake

Relation between dust particle collection and thickness of dust cake



Remark:

The removal of small particles from air stream in dry bag filters is mainly depending on the build up and keeping of dust cake on the filter bags. The dust cake is used as a “pre-filtration” through which all particles have to pass. Normally all fine dust (particles size less than 1 um) we can find in foundry process can be agglomerated to bigger particles. After this agglomeration the removal is very easy with the filter bag. Therefore it is essential to keep and control the dust cake on the filter bags by means of a cleaning device.

About 100 grams/m² of dust on the bags is equal to a dust layer of about 0.1mm

Consumes Less Energy

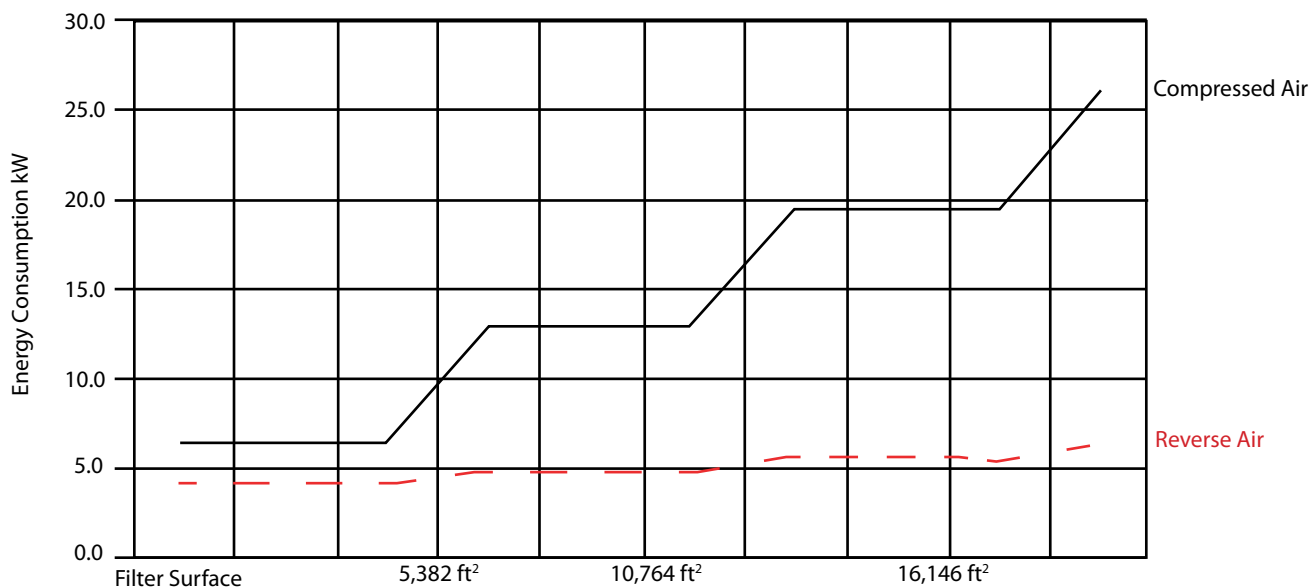
1. Calculation of energy consumption

Reverse air dust collector

Dust collector model:	FS 720/675/945
Total filtering surface ft ² :	13,842
Number cleaning nozzles pcs:	3
Shortest cycle time for cleaning bags min:	10
Energy consumption kW:	5.6

Jet pulse system dust collector

Dust collector model:	PJ
Total filtering surface ft ² :	13,842
Size of compressed air tank ltr:	40
Pressure drop in tank dp bar:	4.5
Number of bag pcs:	135
Number of rows cleaned at the same time pcs:	2
Bag row to bag row time sec:	10
Shortest cycle time for cleaning bags min:	11.25
Energy consumption kW:	12.96



The Vision

VISION, MISSION AND VALUES



- **Vision:**
 1. To provide solutions with added value for our customers, enabling them to optimize their business operations.
 2. To be the preferred partner for our customers worldwide for our products and services and to be an attractive place to work.

- **Mission:**
 1. To provide surface treatment and air cleaning and dust extraction equipment and solutions as a partner for industries such as steel mills, metal and wood working, food processing, asphalt and power plants.

- **Values:**
 1. Trust and fairness towards our customers, owners, employees, suppliers and society.
 2. Innovation based on the needs of our customers.
 3. Reliability in terms of delivering the agreed quality at the agreed time.
 4. Commitment to the environment and enhancement of workplace health.
 5. Promotion of the professional competencies, personal and career development of our employees.

Bringing superior conditions to the workplace and the environment

For more than 60 years Nederman has developed, manufactured and marketed products and system solutions to reduce the strain on the environment and improve working conditions in numerous industries.

Our products and systems have been ground-breaking in industries such as Machining, Metal Fabrication, Automotive, Composite Manufacturing, Food, Paper, Chemical, Pharmaceutical and many others.

Today companies all over the world are using equipment from Nederman.



Nederman LLC
102 Transit Ave
Thomasville NC, 27360
800-533-5286

REGISTERED
ISO
9001:2008
14001:2004

Nederman

www.nederman.com

Nederman Sales companies in: Australia, Austria, Belgium, Brazil, Canada, China, Czech Rep., Denmark, France, Germany, Hungary, India, Ireland, Northern Ireland, Norway, Poland, Portugal, Romania, Russia, Slovakia, Spain, Sweden, Thailand, United Kingdom, USA
Nederman Agents in: Bulgaria, Cyprus, Egypt, Estonia, Finland, Greece, Holland, Hong Kong, Iceland, Iran, Ireland, Italy, Japan, Korea, Latvia, Lithuania, Malaysia, New Zealand, Philippines, Saudi Arabia, Serbia, Singapore, Slovenia, South Africa, Switzerland, Taiwan, R.O.C, Thailand, Turkey, United Arab Emirates