

## VAC 20 and VAC 12

**Low operating costs, efficient and reliable. The right choice for high vacuum extraction of welding fumes, dust from sanding and grinding operations and general clean up applications**

---



Nederman VAC

VAC systems, a cost effective solution for better working environment

The VAC systems are based on a powerful vacuum unit, a modular design dust collector and a modern control unit/starter.

### **A VAC unit is the perfect extraction source:**

- when a large number of working stations require dust extraction.
- when you need a flexible solution matching an expanding production.

### **Adaptable**

VAC units are available in several sizes. 8-40 extraction points can be in operation at the same time, served by one single unit. If you need more extraction points, any capacity can be achieved by parallel connection of two or more units.

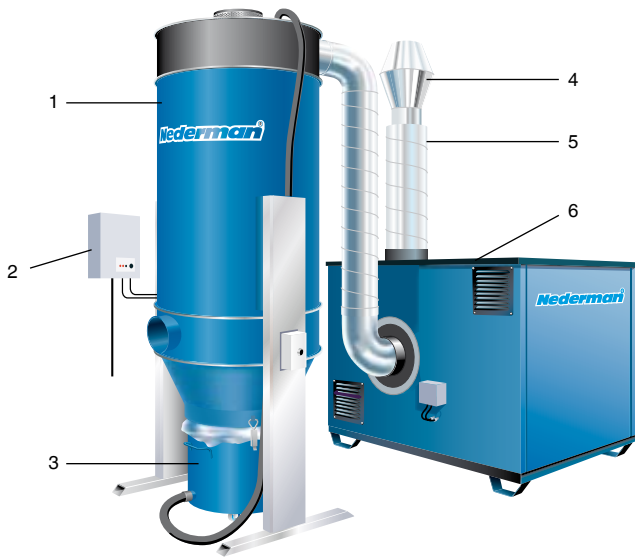
### **Reliable**

VAC units are protected from overload by a flow restrictor and VAC 20 is fitted with an overheat protection.

### **Low operating costs**

VAC units are designed for use in modern systems with automatic vacuum valves. This means that the air flow can vary rapidly from max flow to zero. The power consumption adapts to the present need. The VAC unit comes to a complete stop when not used, thanks to the automatic start/stop function (option).

- Reliable
- Easy to install
- Low noise level
- Low operating costs



1. FlexFilter, a modern modular design dust collector for high vacuum.  
See separate brochure.
2. Control unit.
3. Collecting bin with a plastic sack. Available in many different models.
4. "Jet cap" for outdoor installation.
5. Discharge air silencer
6. High pressure fan and motor are built into an acoustic enclosure.  
Easily accessible for service.

## Accessories

FlexFilter, our modular design dust collector is available in many different options.  
See separate brochure and selection guide.



FlexFilter single



FlexFilter twin

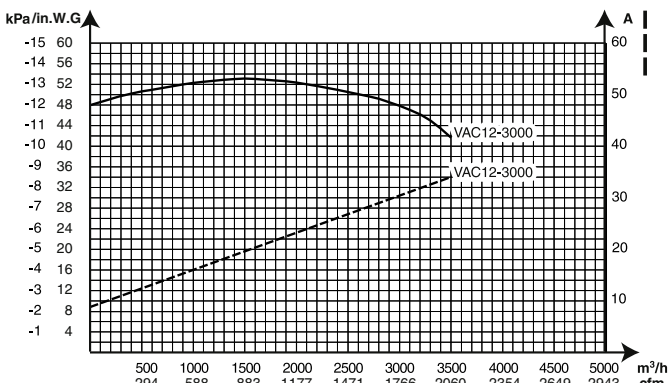


FlexFilter cyclone

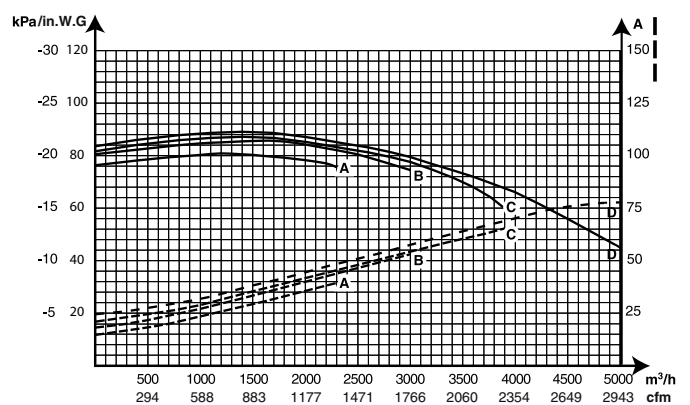


Starter

## Fan diagram VAC12

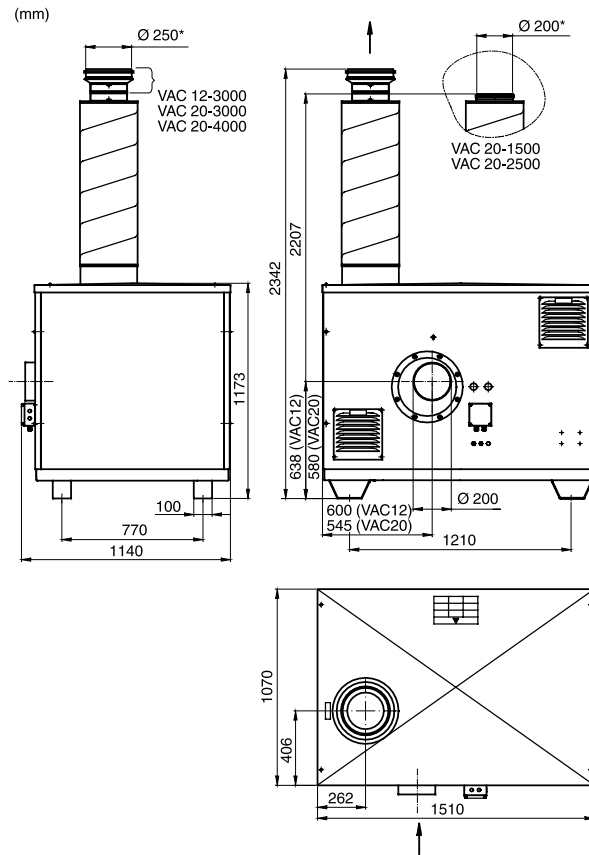


## Fan diagram VAC20



A=VAC20-1500, B=VAC20-2500, C=VAC20-3000, D=VAC20-4000

## Dimensions



## Technical Data

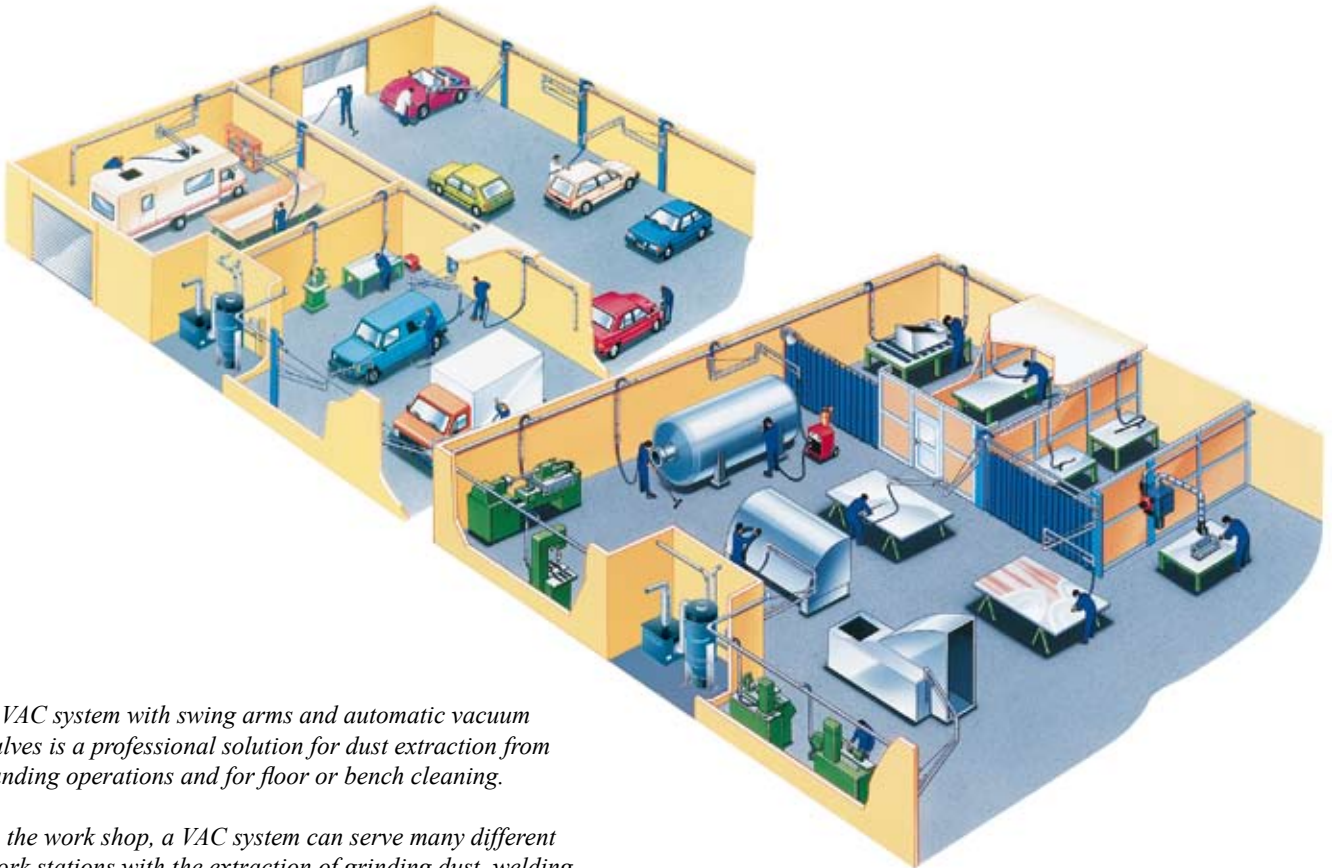
Vacuum unit VAC		12-3000	20-1500	20-2500	20-3000	20-4000
Length	mm (in.)	1510 (59.5)	1510 (59.5)	1510 (59.5)	1510 (59.5)	1510 (59.5)
Width	mm (in.)	1070 (42.1)	1070 (42.1)	1070 (42.1)	1070 (42.1)	1070 (42.1)
Height	mm (in.)	1180 (46.5)	1180 (46.5)	1180 (46.5)	1180 (46.5)	1180 (46.5)
Weight	kg (lb)	390 (860)	530 (1168)	560 (1235)	620 (1367)	655 (1444)
Max. vacuum	kPa (in.W.G.)	-13.3 (53)	-20.1 (80)	-21.5 (86)	-21.5 (86)	-22 (88)
Specified capacity	m <sup>3</sup> /h / kPa (cfm / in.W.G.)	3000/-12 (1766/48)	1500/-20 (883/80)	2500/-20 (1471/80)	3000/-19 (1766/76)	4000/-16.5 (2354/66)
Max flow at rated motor power	m <sup>3</sup> /h (cfm)	3500 (2060)	2300 (1354)	3000 (1766)	3900 (2295)	5000 (2943)
Motor power	kW	18.5	22	30	37	45
Starter	type	S 18.5 YD	W 22 YD	S 30 YD	S 37 YD	S 45 YD
Noise level**, ISO 11201	dB(A)	68.6	66	67	68	68

Model	VAC 20-1500	VAC-20-2500	VAC 20-3000	VAC 20-4000	VAC 12-3000
400V 50Hz	40102440	40102450	40102460	40102480	40102840
400V 50Hz ASC	40102441	40102451	40102461	40102481	
208-230V 60Hz	40102600	40102610	40102620	40102630	
460V 60Hz	40102640	40102650	40102660	40102670	
460V 60Hz ASC			40102661		
575V 60Hz	40102680				
575V 60Hz ASC				40102711	
380V 60Hz	40102720	40102730	40102740	40102750	

## Environmental data

- Solvent-free lacquering.
- Halogen-free (PVC-free) cables.
- High efficiency and automatic start/stop give low power consumption.

## VAC systems for multi purpose use



*A VAC system with swing arms and automatic vacuum valves is a professional solution for dust extraction from sanding operations and for floor or bench cleaning.*

*In the work shop, a VAC system can serve many different work stations with the extraction of grinding dust, welding fumes and factory cleaning.*

- Prevents the dust from spreading in the work shop. Desirable for a clean production and a good working environment.
- On-tool high vacuum extraction during cutting and trimming of composites eliminates the dust before it can spread in the premises.
- Workplace cleaning can be carried out in an effective and environmentally friendly way. Floors, work benches, ventilation pipes, filters and other workspaces are easy to keep clean with high vacuum extraction.
- Welding fumes will be extracted where generated. The on-torch extraction follows the operator's every movement.
- Also suitable for other purposes like removing flour dust in bakeries, foam and dust in textile industries, industrial chemicals etc.

